

# Greenhouse Gas Emissions and Their Impact on Our World:

## What EPA Is Requiring

---

### Background

On October 30, 2009, the U.S. Environmental Protection Agency (EPA) published the Mandatory Reporting of Greenhouse Gases (GHG) Rule in the Federal Register. Under the final rule, effective on December 29, 2009, many facilities are required to submit annual reports of their GHG emissions to EPA, beginning with 2010 calendar year emissions that must be reported by March 31, 2011.

### What This Means to Facilities

EPA estimates that approximately 10,000 entities will be affected by the rule. The GHG Rule lists many source categories to whom the reporting rule applies. Those affected categories include, but are not limited to, certain industrial facilities, municipal solid waste landfills, manure management systems, suppliers of industrial GHGs, producers of petroleum products, producers of coal-based liquid fuels, natural gas fractionators, and local distributors of natural gas and natural gas liquids. See the final GHG rule for a comprehensive list of source categories.

Note that many types of facilities, such as educational and healthcare facilities, are not specifically listed as source categories in the rule. Nevertheless, those facilities may have to report emissions due to the presence of large stationary combustion sources, which emit significant amounts of GHGs. If a particular facility contains none of the other source categories listed in the EPA rule, and if the combined heat-input capacity of all facility stationary fuel combustion equipment is less than 30 million BTU/hr, then the facility is presumed to emit less than 25,000 tons CO<sub>2</sub>e (carbon dioxide equivalent) per year and the facility does not have to report GHG emissions under this rule.

### How We Can Help

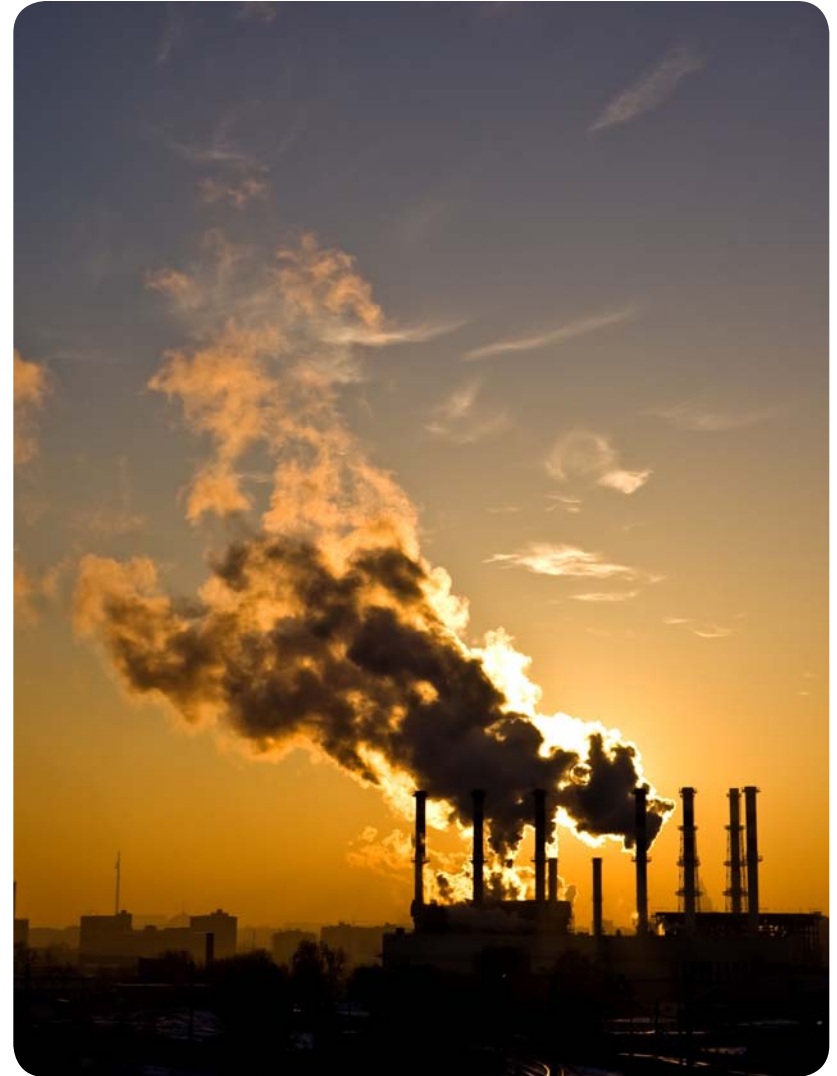
RETTEW is prepared to assist affected entities with all aspects of the GHG Rule, including assistance with interpreting the regulations, developing credible monitoring and recordkeeping procedures, calculating CO<sub>2</sub>e emissions, and preparing the reports, if appropriate.

### Resources

For additional background information and details regarding the EPA's GHG Reporting Rule, visit EPA's Web site at <http://www.epa.gov/climatechange/emissions/ghgrulemaking.html>.

---

Please contact:  
Ron Fulton  
Air Quality Group Manager  
717-697-3551  
[rfulton@rettew.com](mailto:rfulton@rettew.com)



**RETTEW**<sup>SM</sup>  
We answer to you.